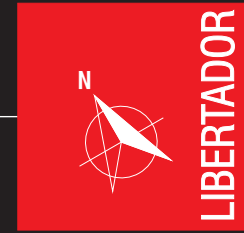


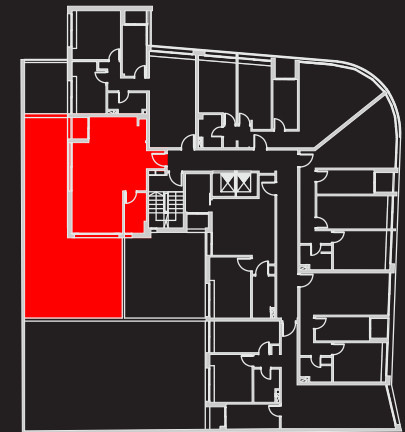


■ Memoria descriptiva

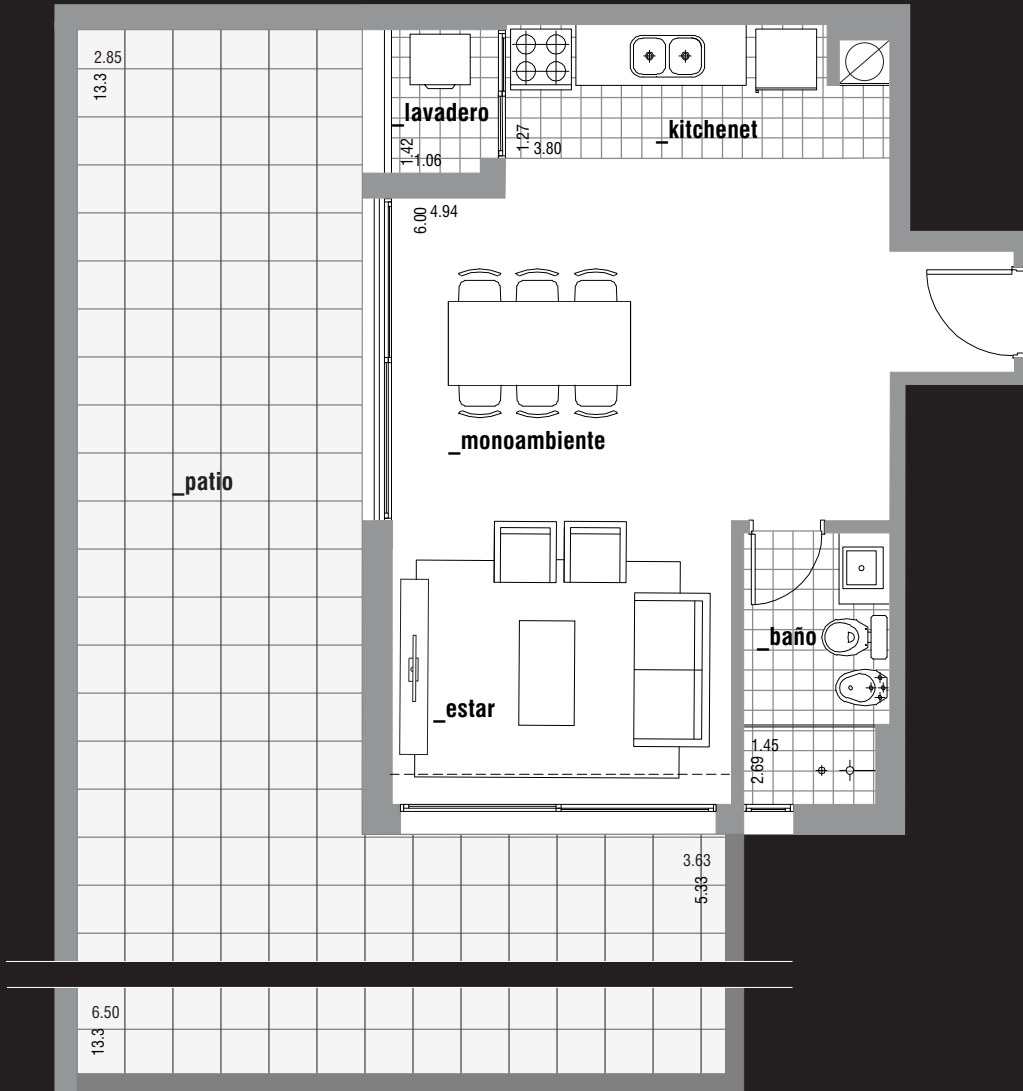
- ABERTURAS EXTERIORES Y BARANDAS EN ALUMINIO ANODIZADO.
- HALLES DE ENTRADA DECORADO CON FINOS MATERIALES.
- ASCENSORES DE MARCA RECONOCIDA EN PLAZA.
- CERÁMICA EN ESTARES Y DORMITORIOS.
- CORTINAS DE ENROLLAR EN DORMITORIOS.
- BAÑOS Y COCINAS CON PISOS Y REVESTIMIENTOS EN CERÁMICA.
- MUEBLES DE COCINA INFERIORES.
- INSTILACIÓN DE GAS PARA COCINAS TODAS LAS UNIDADES.
- INSTALACIÓN PARA TELÉFONO Y TV CABLE.
- GARAGES OPCIONALES.



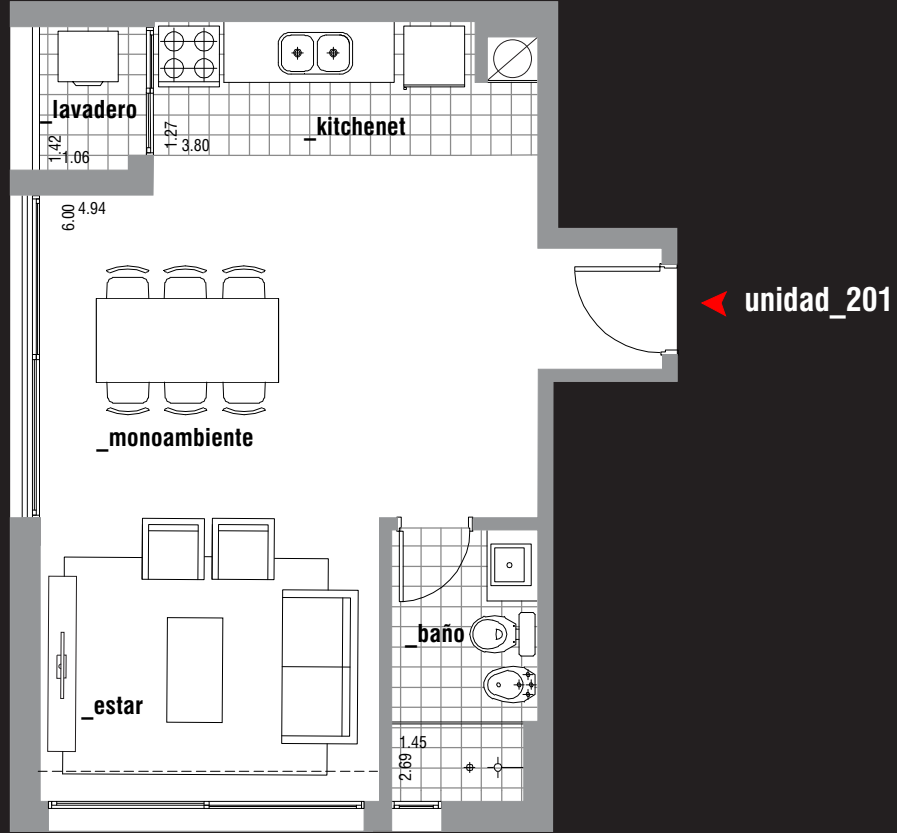
U101



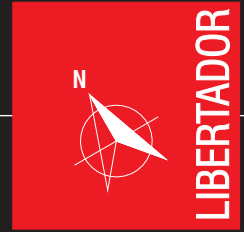
unidad_101



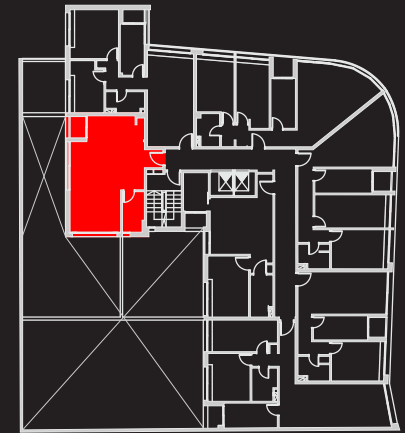
escala [1:75]



escala [1:75]

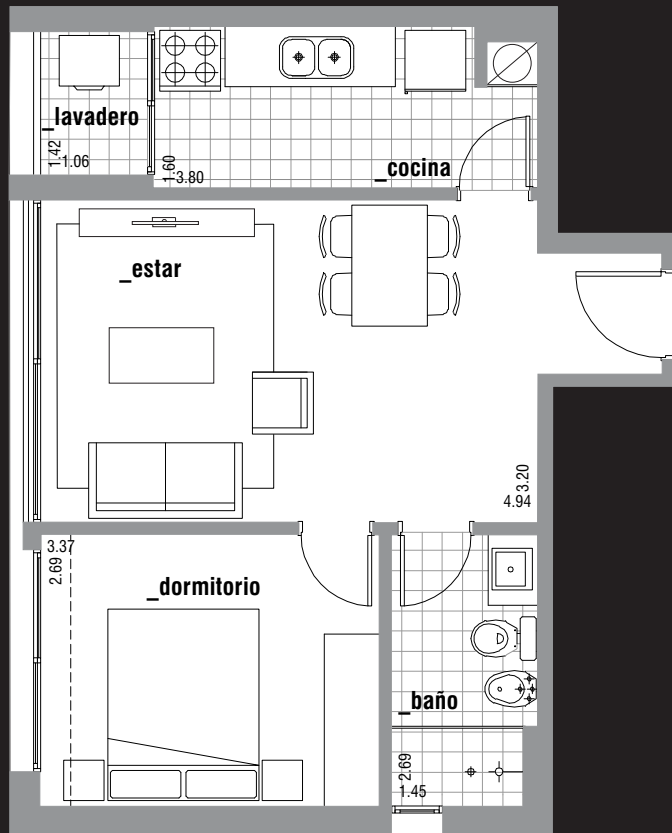
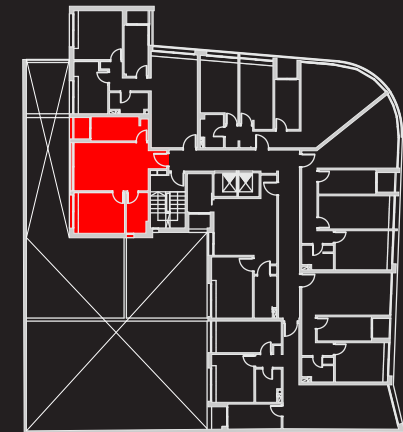


U201





U301-U1001



← unidades_301-1001

escala [1:75]



U102



u102

escala [1:75]





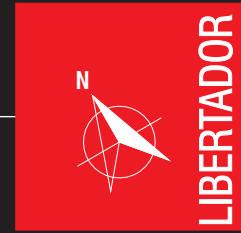
U202



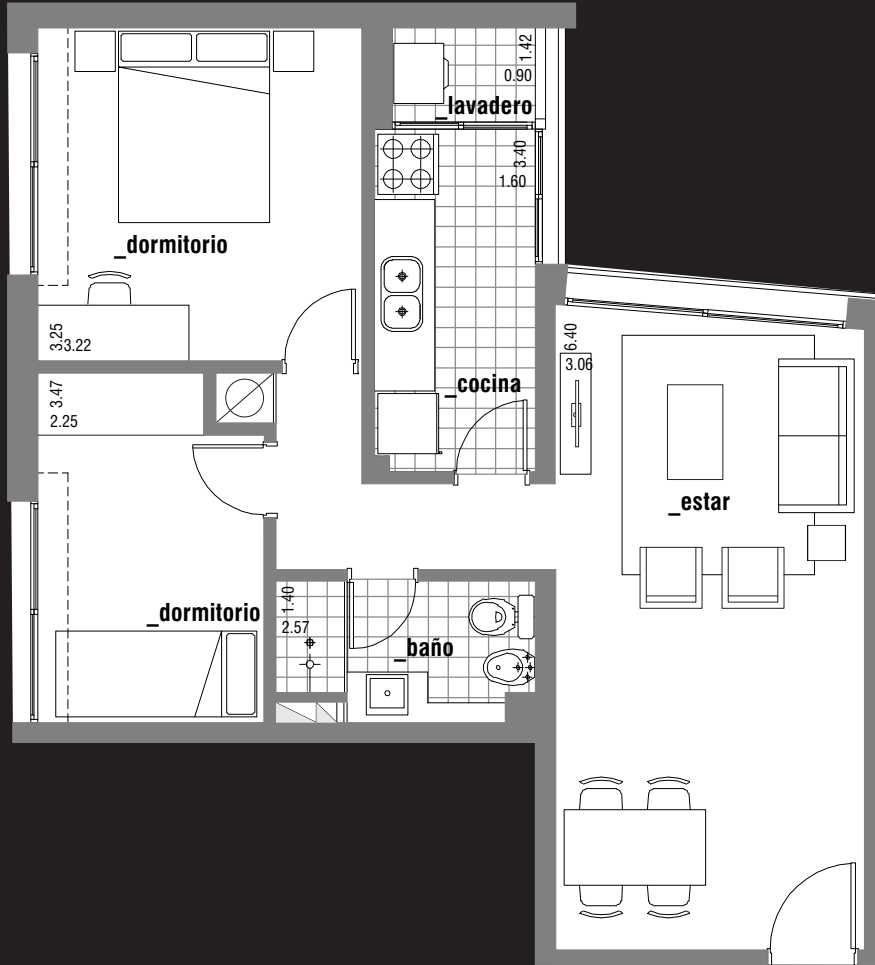
u202

escala [1:75]



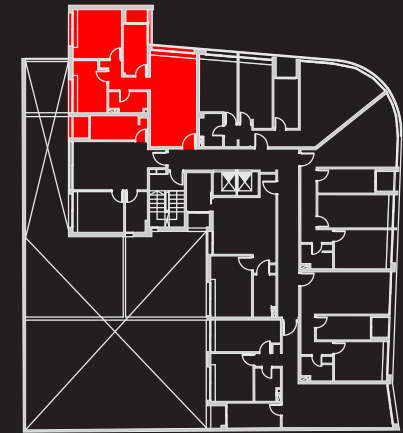


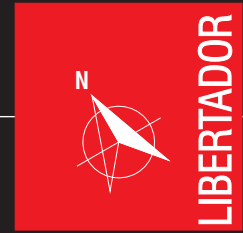
U302-U1002



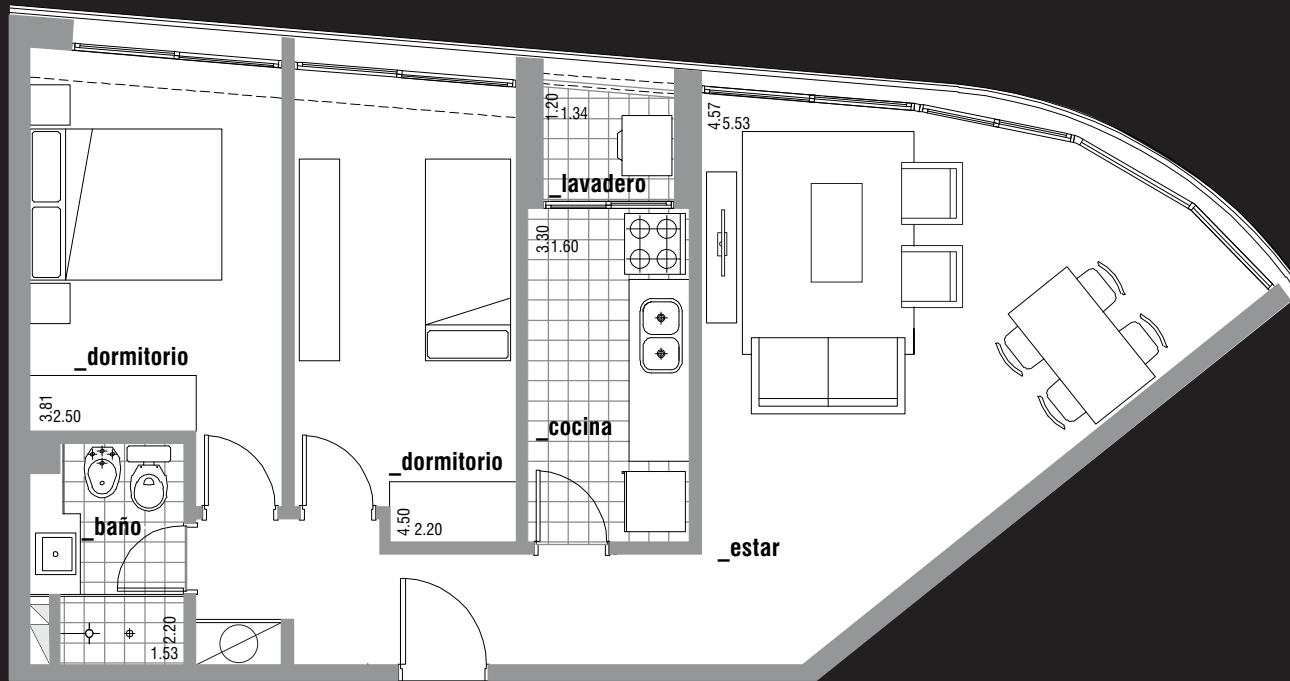
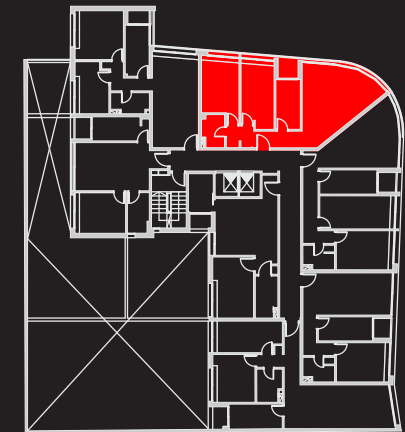
u302-u1002

escala [1:75]



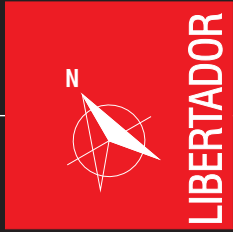


U103-U1003

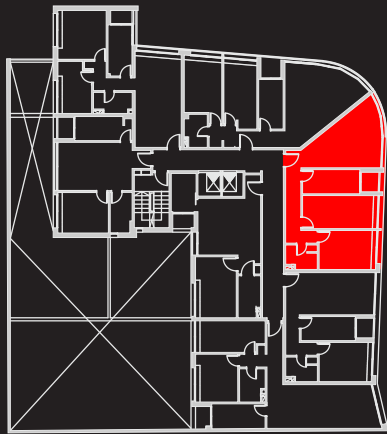


u103-u1003

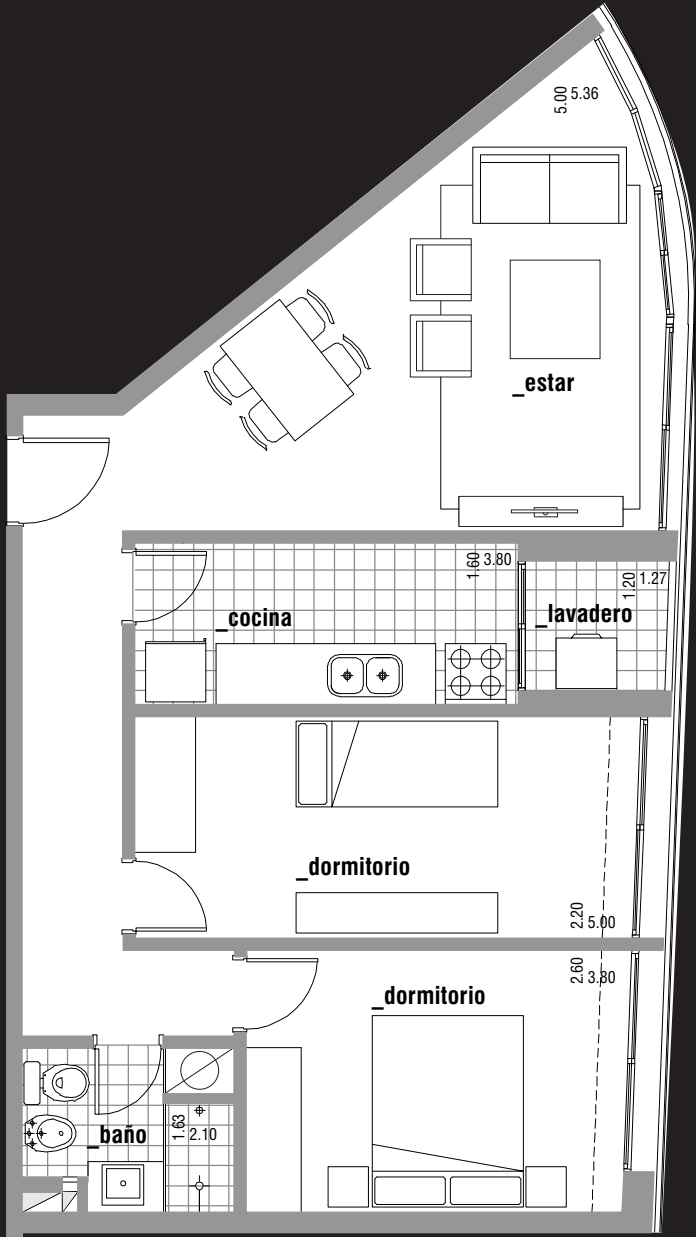
escala [1:75]



U104-U1004



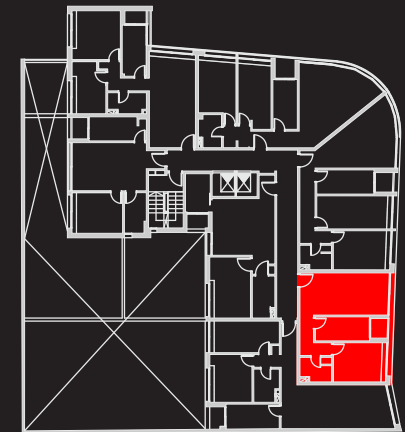
unidad_104-1004 ▶



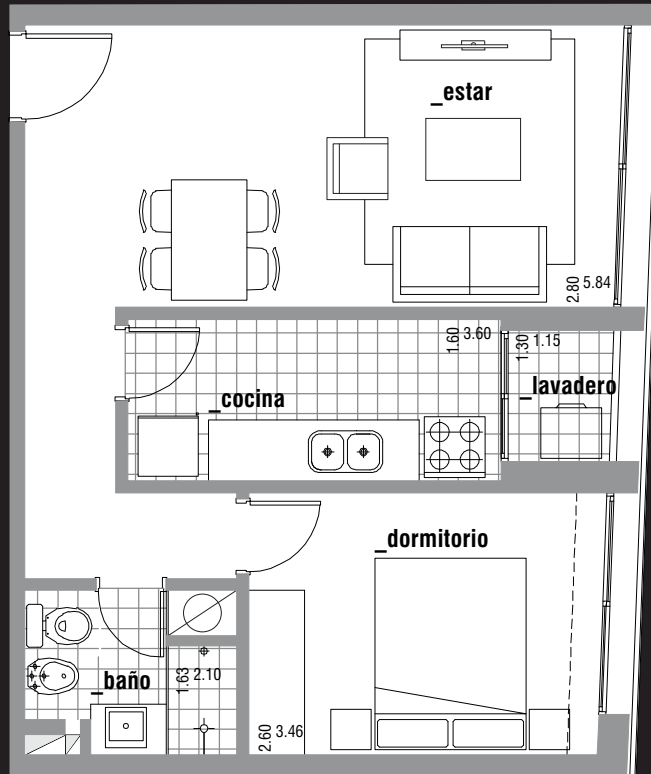
escala [1:75]



U105-U1005



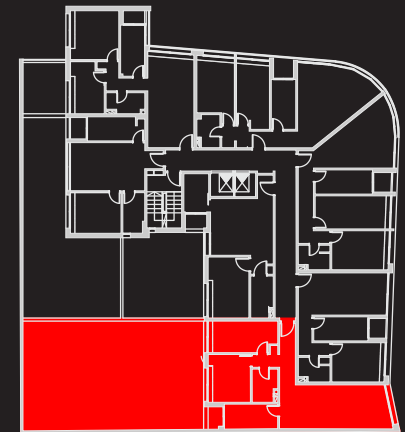
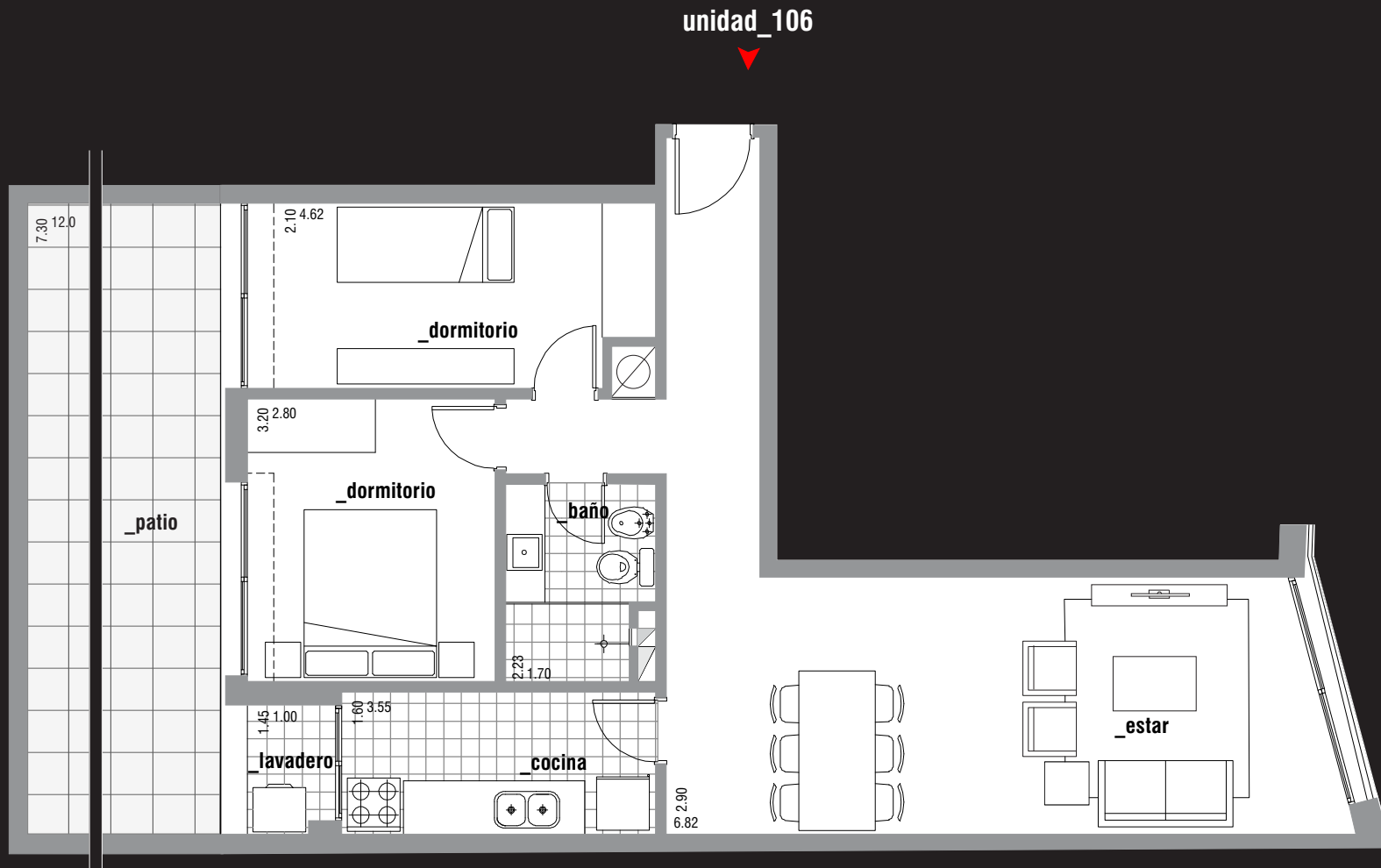
unidad_105-1005



escala [1:75]



U106

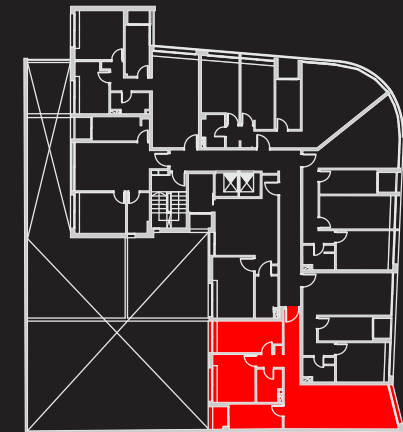


escala [1:75]



U206-U1006

unidad_206-1006



escala [1:75]



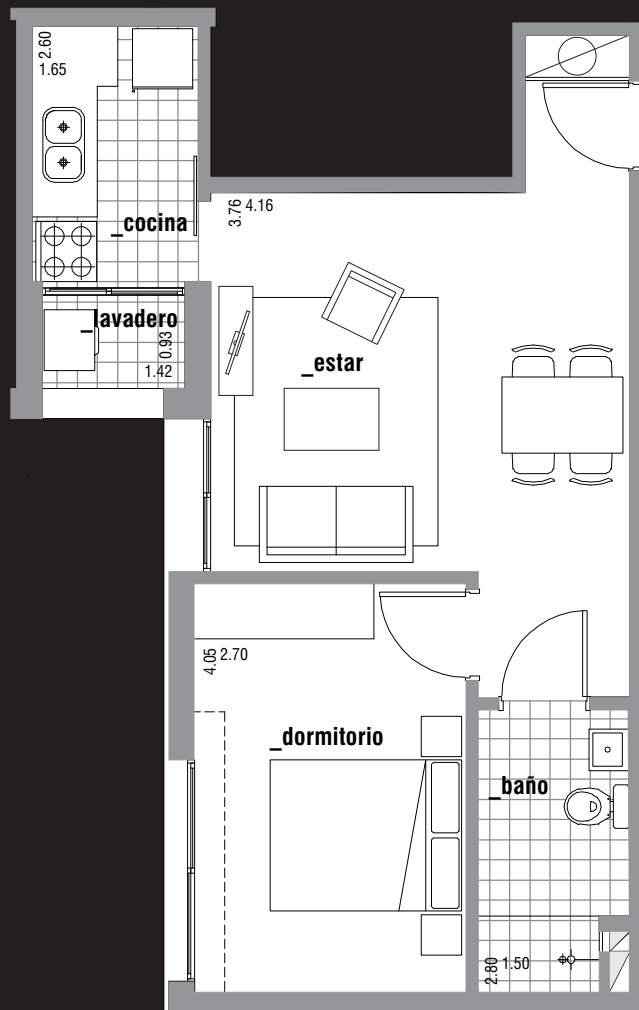
U107



unidad_107
discapacitado

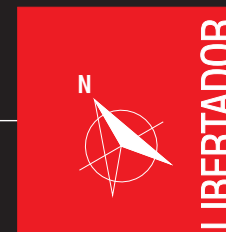
escala [1:75]



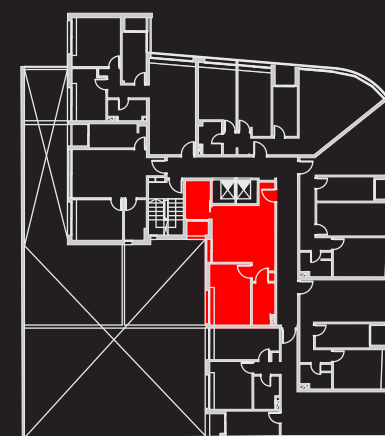


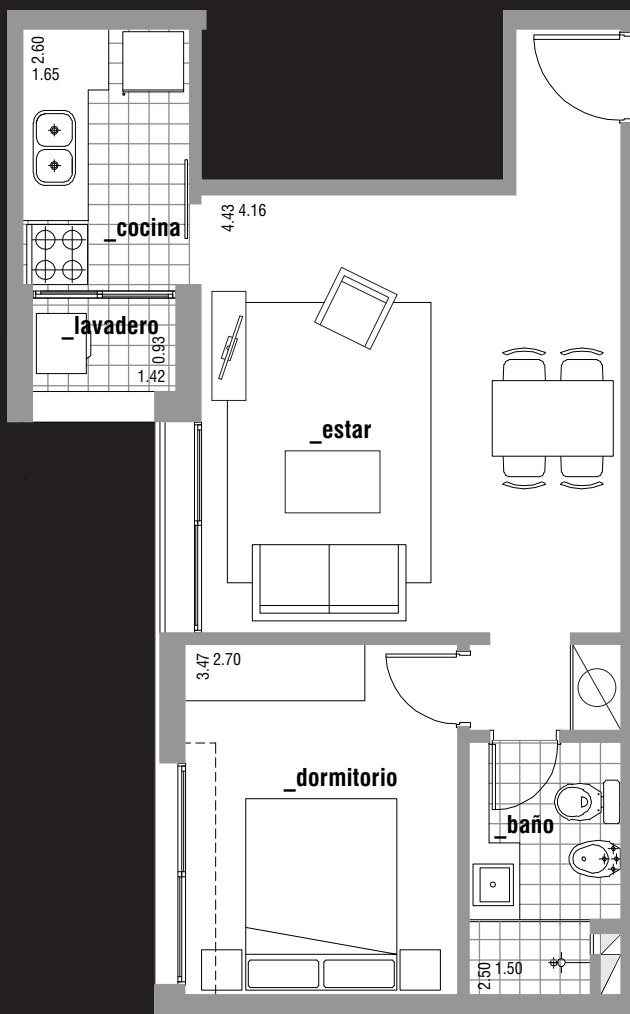
unidad_207
discapacitado

escala [1:75]



U207

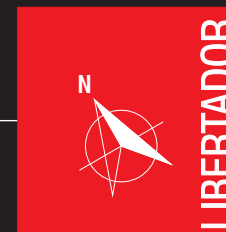




unidad_307-1007

escala [1:75]

escala [1:75]

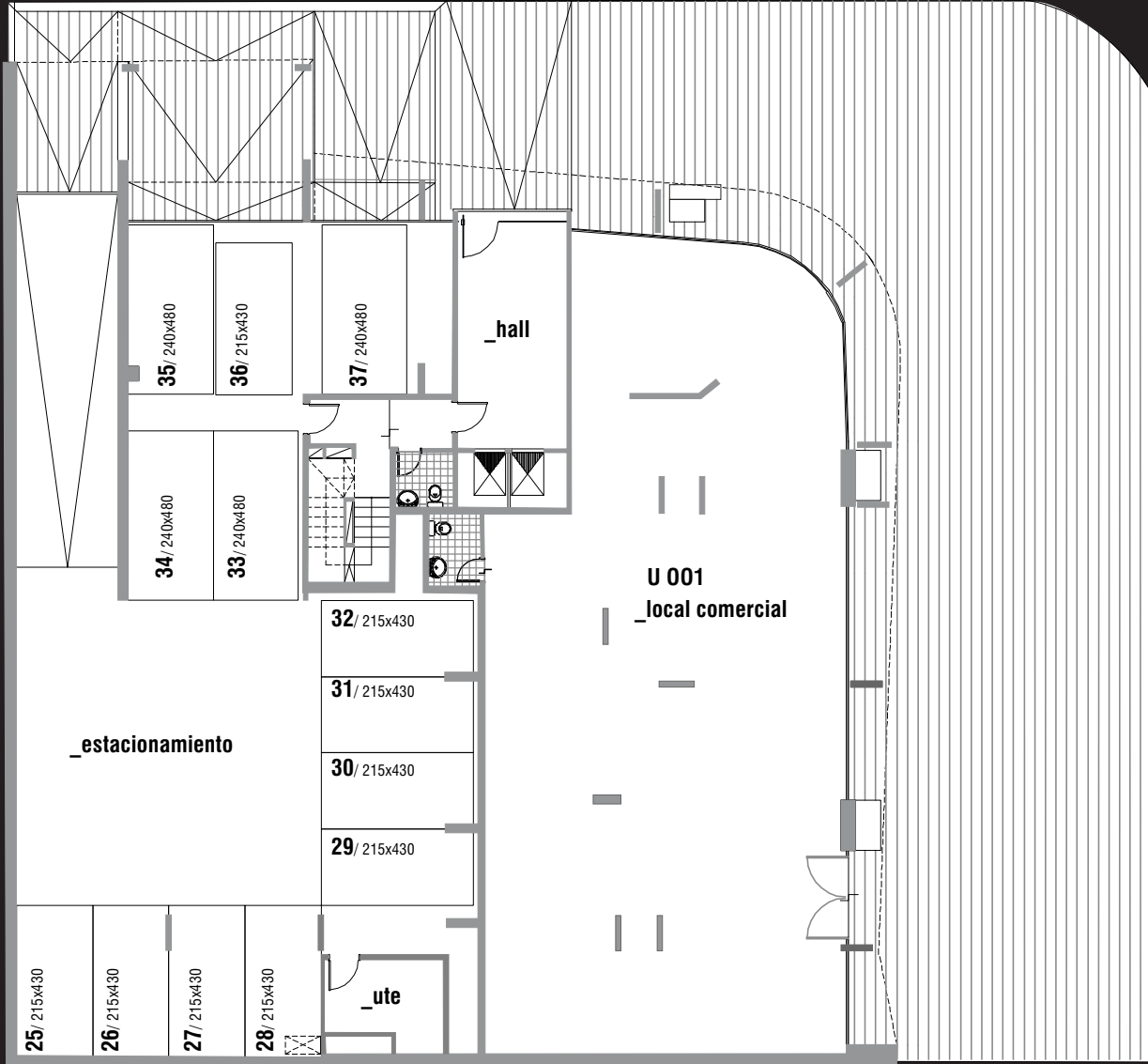


U307-U1007



▼ ACCESO ESTACIONAMIENTOS

▼ ACCESO EDIFICIO



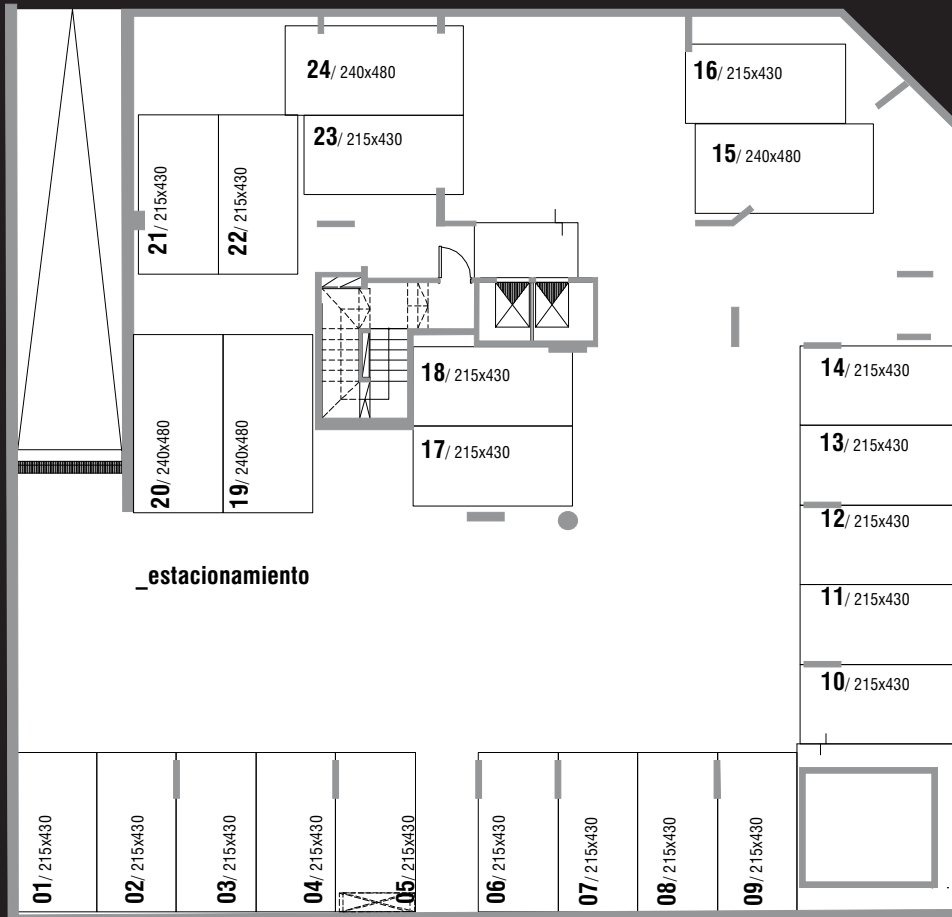
▲ ACCESO LOCAL COMERCIAL

escala [1:200]

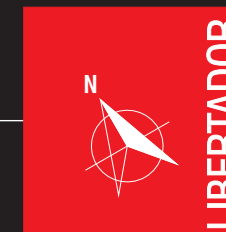


SUBSUELO

ACCESO ESTACIONAMIENTOS



escala [1:200]



ÁREAS

Cuadro de áreas

| Nº DE UNIDAD | ÁREA INT. | PATIO | TOTAL |
|---------------------|-----------|-------|-------|
| 001 LOCAL COMERCIAL | 223.7 | - | 223.7 |

| Nº DE UNIDAD | ÁREA INT. | PATIO | TERR. | SUB. TOTAL | PALLIER | TOTAL |
|--------------|-----------|-------|-------|------------|---------|-------|
|--------------|-----------|-------|-------|------------|---------|-------|

PISO 1

| | | | | | | |
|------------------|-------|-------|------|--------|-------|--------|
| 101 monoambiente | 44.89 | 61.04 | 1.64 | 107.54 | 7.77 | 115.31 |
| 102 2dormitorios | 64.35 | 7.95 | 1.51 | 73.81 | 5.34 | 79.15 |
| 103 2dormitorios | 66.12 | - | 1.50 | 67.62 | 4.89 | 72.51 |
| 104 2dormitorios | 65.46 | - | 1.52 | 66.98 | 4.86 | 71.84 |
| 105 1dormitorio | 46.95 | - | 1.55 | 48.50 | 3.51 | 52.01 |
| 106 2dormitorios | 67.76 | 91.22 | 1.55 | 160.53 | 11.64 | 172.17 |
| 107 1dormitorio | 45.76 | 30.81 | 1.53 | 78.10 | 5.65 | 83.75 |

PISO 2

| | | | | | | |
|------------------|-------|---|------|-------|------|-------|
| 201 monoambiente | 44.89 | - | 1.64 | 46.53 | 4.92 | 51.45 |
| 202 2dormitorios | 64.35 | - | 1.51 | 65.86 | 6.98 | 72.84 |
| 203 2dormitorios | 66.12 | - | 1.50 | 67.62 | 7.16 | 74.78 |
| 204 2dormitorios | 65.46 | - | 1.52 | 66.98 | 7.09 | 74.07 |
| 205 1dormitorio | 46.95 | - | 1.55 | 48.50 | 5.13 | 53.63 |
| 206 2dormitorios | 67.76 | - | 1.55 | 69.31 | 7.35 | 76.66 |
| 207 1dormitorio | 45.76 | - | 1.53 | 47.29 | 5.03 | 52.32 |

PISO 3 al 10

| | | | | | | |
|------------------|-------|---|------|-------|------|-------|
| 301 1dormitorio | 44.89 | - | 1.64 | 46.53 | 4.96 | 51.49 |
| 302 2dormitorios | 61.27 | - | 1.51 | 62.78 | 6.68 | 69.46 |
| 303 2dormitorios | 66.12 | - | 1.50 | 67.62 | 7.20 | 74.82 |
| 304 2dormitorios | 65.46 | - | 1.52 | 66.98 | 7.13 | 74.11 |
| 305 1dormitorio | 46.95 | - | 1.55 | 48.50 | 5.16 | 53.66 |
| 306 2dormitorios | 68.76 | - | 1.55 | 70.31 | 7.49 | 77.80 |
| 307 1dormitorio | 45.76 | - | 1.53 | 47.29 | 5.03 | 52.32 |

NOTA

El equipamiento graficado es solo a efecto de sugerir una distribución de muebles.

Área interior: se considera al área interior de propiedad individual determinada en el plano de señalamiento, y su cuota parte de los muros.